

# International Rectifier IRFK2D150, IRFK2F150

## Isolated Base Power HEX-pak™ Assembly - Half Bridge Configuration

- High Current Capability.
- UL recognised E78996.
- Electrically Isolated Base Plate.
- Easy Assembly into Equipment.



### Description

The HEX-pak™ utilises the well-proven HEXFET™ die, combining low on-state resistance with high transconductance. These superior technology die are assembled by state of the art techniques into the TO-240 package, featuring 2.5kV rms isolation and solid M5 screw connections. The small footprint means the package is highly suited to power applications where space is a premium. Available in two versions, IRFK.D... for fast switching and IRFK.F... for oscillation sensitive applications.

$$V_{DS} = 100V$$

$$R_{DS(on)} = 28m\Omega$$

$$I_D = 72A$$

### Absolute Maximum Rating

	Parameter	Max.	Units
$I_D @ T_C=25^\circ C$	Continuous Drain Current	72	A
$I_D @ T_C=100^\circ C$	Continuous Drain Current	45	A
$I_{DM}$	Pulse Drain Current	288	A ①
$P_D @ T_C=25^\circ C$	Maximum Power Dissipation	500	W
$V_{GS}$	Gate-to-Source Voltage	20	V
$V_{INS}$	R.M.S. Isolation Voltage, circuit to base	2.5	kV
$T_J$	Operating Junction Temperature Range	-40 to 150	°C
$T_{STG}$	Storage Temperature Range	-40 to 150	°C

### Thermal and Mechanical Specifications

	Parameter	Min.	Typ.	Max.	Units
$R_{thJC}$	Junction-to-Case	-	-	0.25	K/W ②
$R_{thCS}$	Case-to-Sink, smooth & greased surface	-	0.1	-	K/W
T	Mounting Torque +10%				③
	HEXpak to Heatsink	-	5	-	Nm
	Busbar to HEXpak	-	3	-	Nm
wt	Approximate Weight	-	140	-	g
		-	5	-	oz

#### Notes:

- ① - Repetitive Rating: Pulse width limited by maximum junction temperature see figure 8.
- ② - Per Module.
- ③ - A mounting compound is recommended and the torque should be rechecked after a period of three hours to allow for the spread of the compound.

# IRFK2D150,IRFK2F150



## Electrical Characteristics @ $T_J = 25^\circ\text{C}$ (Unless otherwise specified)

	Parameter	Min.	Typ.	Max.	Units	Test Conditions	
$B_{VDS}$	Drain-to-Source Breakdown voltage	100	-	-	V	$V_{GS}=0V, I_D=1.0mA$	
$R_{DS(on)}$	Static Drain-to-Source On-State Resistance	-	23	28	m $\Omega$	$V_{GS}=10V, I_D=45A$	
$I_{D(on)}$	On-State Drain Current	72	-	-	A	$V_{DS} > I_{D(on)} \times R_{DS(on)}$ max, $V_{GS}=10V$	
$V_{GS(th)}$	Gate Threshold Voltage	2.0	-	4.0	V	$V_{DS}=V_{GS}, I_D=1.0mA$	
$g_{fs}$	Forward Transconductance ③	26	40	-	S	$V_{DS} > 50V, I_D=45A$	
$I_{DSS}$	Zero Gate Voltage Drain Current	-	-	0.5	mA	$V_{DS}=V_{DS}max, V_{GS}=0V$	
		-	-	2.0	mA	$V_{GS}=10V, T_C=125^\circ\text{C},$ $V_{DS}=V_{DS}max \times 0.8$	
$I_{GSS}$	Gate-to-Source Leakage Forward	-	-	200	nA	$V_{GS}=20V$	
$I_{GSS}$	Gate-to-Source Leakage Reverse	-	-	-200	nA	$V_{GS}=-20V$	
$Q_g$	Total Gate Charge	-	180	250	nC	$I_D=120A, V_{GS}=10V,$	
$Q_{gs}$	Gate-to-Source Charge	-	40	50	nC	$V_{DS}=V_{DS}max \times 0.8$	
$Q_{gd}$	Gate-to-Drain ("Miller") Charge	-	80	125	nC		
$t_{d(on)}$	Turn-on Delay Time	IRFK2D150	-	60	-	ns	$V_{DD}=40V, I_D=45A,$ $V_{GS}=10V,$
		IRFK2F150	-	70	-	ns	
$t_r$	Rise Time	IRFK2D150	-	150	-	ns	$R_{SOURCE}=3.3\Omega$
		IRFK2F150	-	190	-	ns	
$t_{d(off)}$	Turn-off Delay Time	IRFK2D150	-	160	-	ns	$R_{SOURCE}=3.3\Omega$
		IRFK2F150	-	210	-	ns	
$t_f$	Fall Time	IRFK2D150	-	60	-	ns	$R_{SOURCE}=3.3\Omega$
		IRFK2F150	-	100	-	ns	
$L_{DS}$	Drain-to-Source Inductance	-	18	-	nH		
$C_{iss}$	Input Capacitance	-	5.3	-	nF	$V_{GS}=0V, V_{DS}=25V,$	
$C_{oss}$	Output Capacitance	-	2.0	-	nF	$f=1.0MHz$	
$C_{rss}$	Reverse Transfer Capacitance	-	0.6	-	nF		
	Linear Derating Factor	-	-	4	W/K		

## Source-Drain Diode Ratings and Characteristics

	Parameter	Min.	Typ.	Max.	Units	Test Conditions
$I_S$	Continuous Source Current (Body Diode)	-	-	72	A	
$I_{SM}$	Pulsed Source Current (Body Diode)	-	-	250	A	
$V_{SD}$	Diode Forward Voltage	-	-	2.5	V	$V_{GS}=0V, I_S=72A, T_C=25^\circ\text{C}$
$t_{rr}$	Reverse Recovery Time	90	190	390	ns	$di/dt=200A/\mu s, T_J=150^\circ\text{C}$
$Q_{rr}$	Reverse Recovered Charge	1.5	3.2	6.8	$\mu\text{C}$	$I_S=72A$

### Notes:

③ - Pulse Width  $\leq 300\mu s$ ; Duty cycle  $\leq 2\%$ .



# IRFK2D150, IRFK2J150

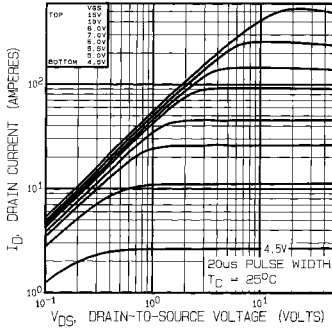


Fig 1. Typical Output Characteristics,  $T_C = 25^\circ\text{C}$

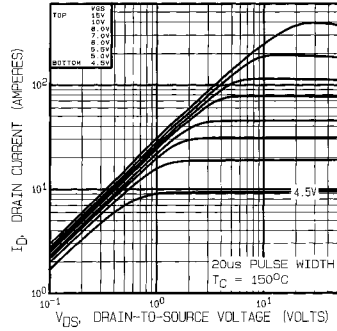


Fig 2. Typical Output Characteristics,  $T_C = 150^\circ\text{C}$

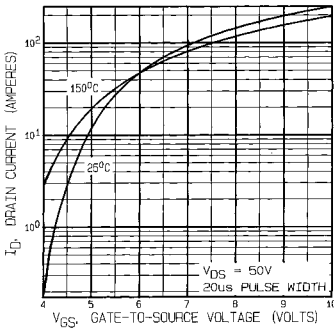


Fig 3. Typical Transfer Characteristics

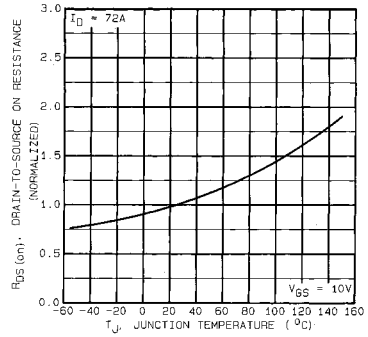
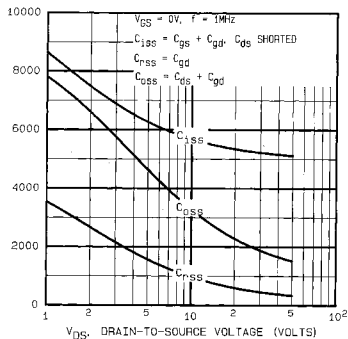
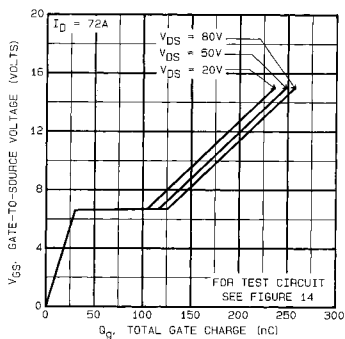


Fig 4. Normalized On-Resistance Vs. Temperature

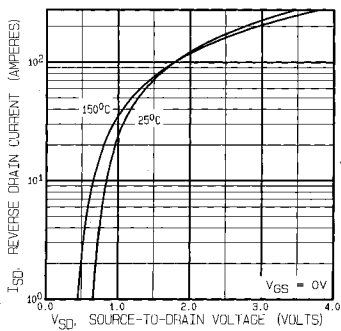
# IRFK2D150, IRFK2F150



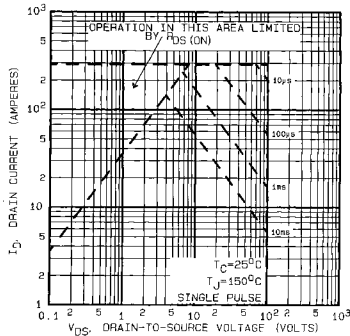
**Fig 5. Typical Capacitance Vs. Drain-to-Source Voltage**



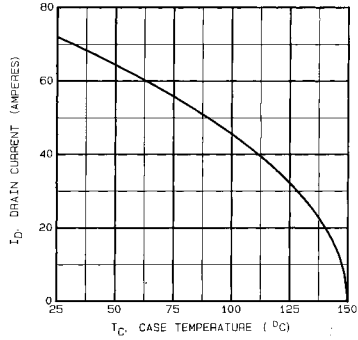
**Fig 6. Typical Gate Charge Vs. Gate-to-Source Voltage**



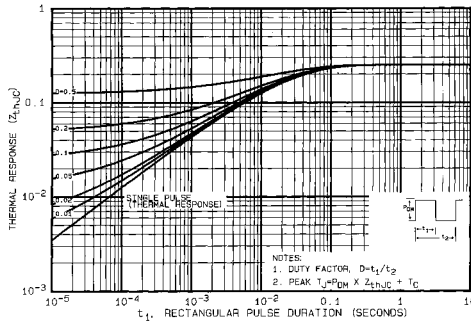
**Fig 7. Typical Source-Drain Diode Forward Voltage**



**Fig 8. Maximum Safe Operating Area**



**Fig 9. Maximum Drain Current Vs. Case Temperature**



**Fig 10. Maximum Effective Transient Thermal Impedance, Junction-to-Case**

# IRFK2D150, IRFK2F150

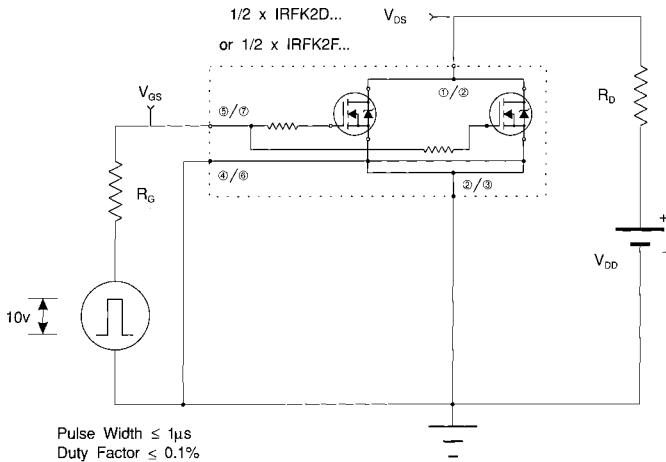


Fig 11a. Switching Time Test Circuit

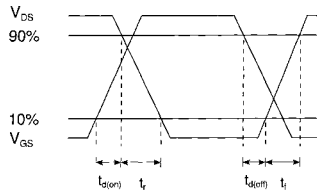
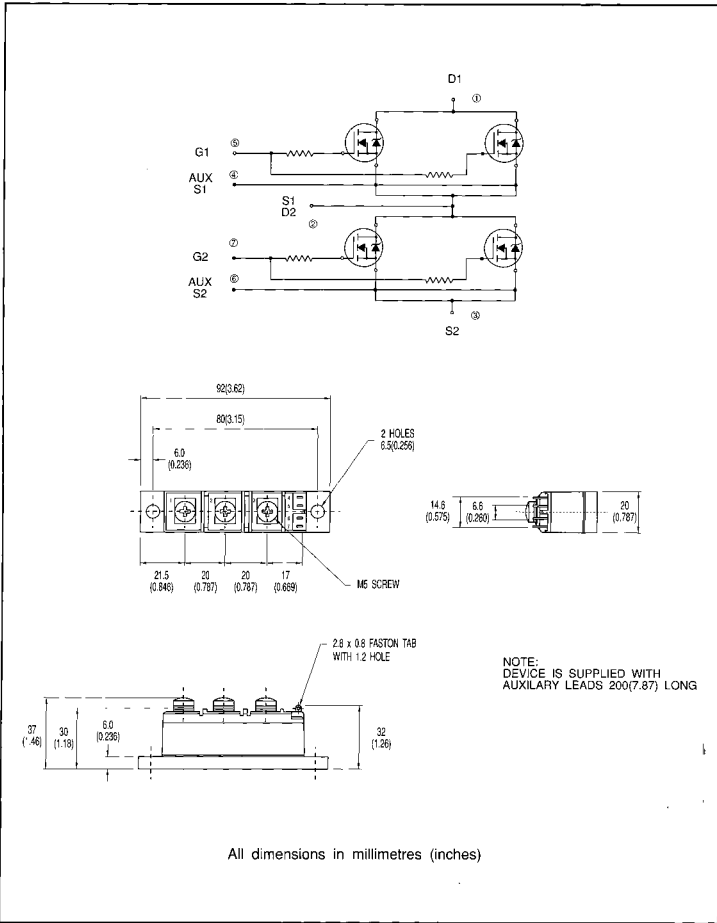


Fig 11b. Switching Time Waveforms



# IRFK2D150,IRFK2J150

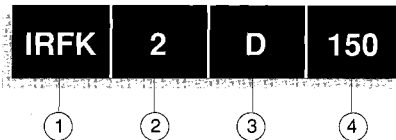
## Circuit Configuration and Outline



# IRFK2D150,IRFK2F150



## Part Numbering



1. - HEX-pak Module.
2. - Number of arms of bridge.
3. - D - Fast switching.  
- F - Oscillation resistant for sensitive applications.
4. - Voltage code:-
  - 054 - 60V
  - 150 - 100V
  - 250 - 200V
  - 350 - 400V
  - 450 - 500V
  - C50 - 600V

**WORLD HEADQUARTERS:** 233 Kansas St., EL SEGUNDO, California 90245, USA. Tel:(213) 772-2000. Tlx:964464. Fax:(213) 772-9028  
**EUROPEAN HEADQUARTERS:** Hurst Green, OXTEd, Surrey RH8 9BB, UK. Tel:(0883) 713215. Tlx:95219. Fax:(0883)714234.

**CANADA:** 101 Bentley St., Markham, ONTARIO L3R 9L1. Tel:(416)475-1997. Tlx:06-966-650. Fax:(416)475-8901  
**CZECHOSLOVAKIA:** Macurova 19/1565, Box 30, 148 00 PRAGUE. Tel:(2) 792 6831. Fax:(2) 792 6831.  
**DENMARK:** P.O. Box 70, Krogehojvej 51, DK-2880 BAGSVAERD. Tel:(45) 44 37 71 50. Fax (45) 44 37 71 52.  
**FRANCE:** 123 Rue de Petit Vaux, 91360 EPINAY sur ORGE. Tel:(1)64-54-83-29. Tlx:600943. Fax:(1)64-54-83-30.  
**FINLAND:** Biilikkogsvägen 18, 02580 Sundkå S. Tel:(0) 262 8144. Fax:(0) 262 8150.  
**GERMANY:** Saaburgerstr. 187, D-6380 BAD HOMBURG. Tel:(61)72 37066. Tlx:410404. Fax:(61)72 37065.  
**HUNGARY:** Szent Istvan Park 15, H-1137 BUDAPEST. Tel:(1) 1298 822. Fax:(1) 1298 822.  
**HONG KONG:** 202 Peter Building, 60 Queens Road Central, HONG KONG. Tel:(85) 252 36355. Fax: (85) 284 52938.  
**ITALY:** Via Liguria 45, 10071 Borgaro, TORINO. Tel:(011)470 14 84. Tlx:221257. Fax:(011)470 42 90.  
Via Zucca 8, 20117 Rho MILANO. Tel:(02)92 50 36 50. Fax:(02)92 50 36 55.  
Via Anno 1, 40139 BOLOGNA. Tel:(051)49 33 07. Fax:(051)49 54 80.  
**INDIA:** 31 Greenacre, S Union Park, Khar (W), BOMBAY 400 052. Tel:(022)535026/533779/540242. Tlx:011-71481.  
**JAPAN:** K & H Bldg. 2F, 3-30-4 Nishi-Ikebukuro, Toshima-ku, TOKYO, Japan 171. Tel:(03)983 0641. Fax:(03)983 0642.  
**SINGAPORE:** HEX 10-01 Fortune Centre, 150 Middle Road, SINGAPORE 0718. Tel:(65)336 3922/337 4696/336 6286. Fax: (65)337 4692.  
**SWEDEN:** Box: 86, S-162 12 Vallingby 1, STOCKHOLM. Tel:(08)72035. Fax:(08)74242.  
**SWITZERLAND:** CH-8032 ZURICH, Kirchenweg 5. Tel:(01)386 8702/8686. Fax:(01)383 5108/2379.  
**U.S.A.:**  
**Central Zone:** 2401 Plum Grove Road, Suite 111, PALATINE, IL60067. Tel:(312)397-0002. Fax:(312)397-0114.  
**Eastern Zone:** 71 Grand Avenue, PALISADES PARK, NJ07650. Tel:(201)940-4054. Fax:(201)940-5754.  
**Southern Zone:** 800 Office Plaza Blvd., Suite 401, KISSIMMEE, FL32743. Tel:(407)933-2393. Fax:(407)933-2293.  
**Western Zone:** 222 Kansas Street, EL SEGUNDO, CA90245. Tel:(213)607-8888. Fax:(213)640-6533.

Sales Offices, Agents and Distributors in Major Cities throughout the World.

In the interest of product improvement INTERNATIONAL RECTIFIER reserves the right to change specifications at any time without notice.

M.J.W/192