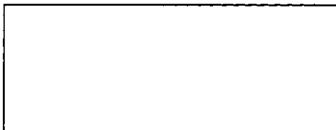


# International Rectifier **IRFK4H054, IRFK4J054**

## Isolated Base Power HEX-pak™ Assembly - Parallel Chip Configuration

- High Current Capability.
- UL recognised E78996.
- Electrically Isolated Base Plate.
- Easy Assembly into Equipment.



### Description

The HEX-pak™ utilises the well-proven HEXFET™ die, combining low on-state resistance with high transconductance. These superior technology die are assembled by state of the art techniques into the TO-240 package, featuring 2.5kV rms isolation and solid M5 screw connections. The small footprint means the package is highly suited to power applications where space is a premium. Available in two versions, IRFK.H... for fast switching and IRFK.J... for oscillation sensitive applications.

$$V_{DS} = 60V$$

$$R_{DS(on)} = 5m\Omega$$

$$I_D = 150A^{④}$$

### Absolute Maximum Rating

	Parameter	Max.	Units
$I_D @ T_C=25^\circ C$	Continuous Drain Current	150 <sup>③</sup>	A
$I_D @ T_C=100^\circ C$	Continuous Drain Current	150 <sup>③</sup>	A
$I_{DM}$	Pulse Drain Current	960	A <sup>①</sup>
$P_D @ T_C=25^\circ C$	Maximum Power Dissipation	500	W
$V_{GS}$	Gate-to-Source Voltage	20	V
$V_{INS}$	R.M.S. Isolation Voltage, circuit to base	2.5	kV
$T_J$	Operating Junction Temperature Range	-40 to 150	$^\circ C$
$T_{STG}$	Storage Temperature Range	-40 to 150	$^\circ C$

### Thermal and Mechanical Specifications

	Parameter	Min.	Typ.	Max.	Units
$R_{thJC}$	Junction-to-Case	-	-	0.25	K/W <sup>②</sup>
$R_{thCS}$	Case-to-Sink, smooth & greased surface	-	0.1	-	K/W
T	Mounting Torque +10%	-	-	-	<sup>③</sup>
	HEXpak to Heatsink	-	5	-	Nm
	Busbar to HEXpak	-	3	-	Nm
wt	Approximate Weight	-	140	-	g
		-	5	-	oz

#### Notes:

- ① - Repetitive Rating: Pulse width limited by maximum junction temperature see figure 8.
- ② - Per Module.
- ③ - A mounting compound is recommended and the torque should be rechecked after a period of three hours to allow for the spread of the compound.
- ④ - Limited by package.

# IRFK4H054, IRFK4J054



## Electrical Characteristics @ $T_J = 25^\circ\text{C}$ (Unless otherwise specified)

	Parameter	Min.	Typ.	Max.	Units	Test Conditions	
$B_{VDS}$	Drain-to-Source Breakdown voltage	60	-	-	V	$V_{GS}=0V, I_D=1.0mA$	
$R_{DS(on)}$	Static Drain-to-Source On-State Resistance	-	4	5	m $\Omega$	$V_{GS}=10V, I_D=76A$	
$I_{D(on)}$	On-State Drain Current	150	-	-	A	$V_{DS} > I_{D(on)} \times R_{DS(on)}$ max, $V_{GS}=10V$	
$V_{GS(th)}$	Gate Threshold Voltage	2.0	-	4.0	V	$V_{DS}=V_{GS}, I_D=1.0mA$	
$g_{fs}$	Forward Transconductance <sup>⑤</sup>	124	188	-	S	$V_{DS} > 50V, I_D=150A$	
$I_{DSS}$	Zero Gate Voltage Drain Current	-	-	1.0	mA	$V_{DS}=V_{DS}max, V_{GS}=0V$	
		-	-	4.0	mA	$V_{GS}=10V, T_C=125^\circ\text{C},$ $V_{DS}=V_{DS}max \times 0.8$	
$I_{GSS}$	Gate-to-Source Leakage Forward	-	-	400	nA	$V_{GS}=20V$	
$I_{GSS}$	Gate-to-Source Leakage Reverse	-	-	-400	nA	$V_{GS}=-20V$	
$Q_g$	Total Gate Charge	-	520	600	nC	$I_D=150A, V_{GS}=10V,$	
$Q_{gs}$	Gate-to-Source Charge	-	100	148	nC	$V_{DS}=V_{DS}max \times 0.8$	
$Q_{gd}$	Gate-to-Drain ("Miller") Charge	-	180	272	nC		
$t_{d(on)}$	Turn-on Delay Time	IRFK4H054	-	110	-	ns	$V_{DD}=25V, I_D=150A,$ $V_{GS}=10V,$
		IRFK4J054	-	125	-	ns	
$t_r$	Rise Time	IRFK4H054	-	700	-	ns	$R_{SOURCE}=3.3\Omega$
		IRFK4J054	-	800	-	ns	
$t_{d(off)}$	Turn-off Delay Time	IRFK4H054	-	400	-	ns	$R_{SOURCE}=3.3\Omega$
		IRFK4J054	-	530	-	ns	
$t_f$	Fall Time	IRFK4H054	-	260	-	ns	$R_{SOURCE}=3.3\Omega$
		IRFK4J054	-	300	-	ns	
$L_{DS}$	Drain-to-Source Inductance	-	18	-	nH		
$C_{iss}$	Input Capacitance	-	9.3	-	nF	$V_{GS}=0V, V_{DS}=25V,$	
$C_{oss}$	Output Capacitance	-	1.7	-	nF	$f=1.0MHz$	
$C_{rss}$	Reverse Transfer Capacitance	-	0.5	-	nF		
	Linear Derating Factor	-	-	4	W/K		

## Source-Drain Diode Ratings and Characteristics

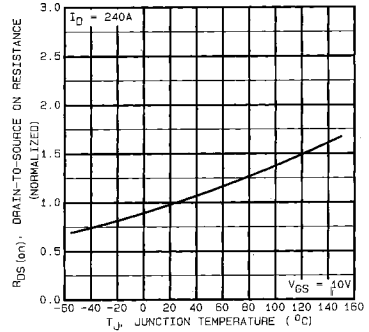
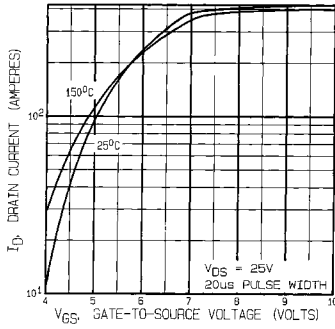
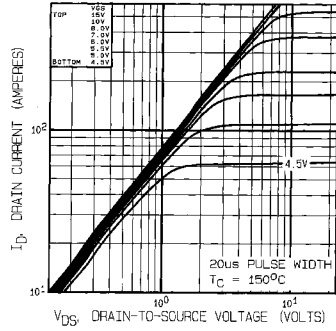
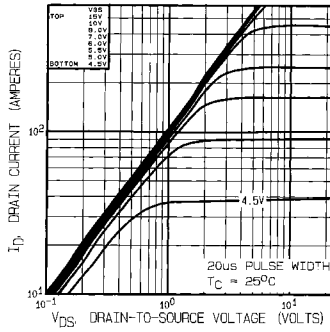
	Parameter	Min.	Typ.	Max.	Units	Test Conditions
$I_S$	Continuous Source Current (Body Diode)	-	-	150	A	
$I_{SM}$	Pulsed Source Current (Body Diode)	-	-	800	A	
$V_{SD}$	Diode Forward Voltage	-	-	2.5	V	$V_{GS}=0V, I_S=150A, T_C=25^\circ\text{C}$
$t_{rr}$	Reverse Recovery Time	71	150	320	ns	$dI/dt=400A/\mu s, T_J=150^\circ\text{C}$
$Q_{rr}$	Reverse Recovered Charge	4.4	10.0	23.0	$\mu\text{C}$	$I_S=150A$

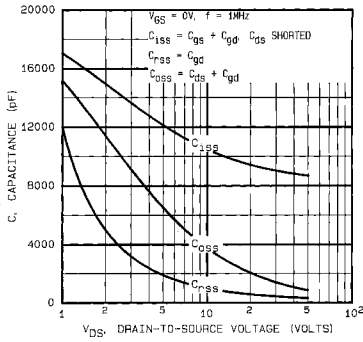
### Notes:

⑤ - Pulse Width  $\leq 300\mu s$ ; Duty cycle  $\leq 2\%$ .

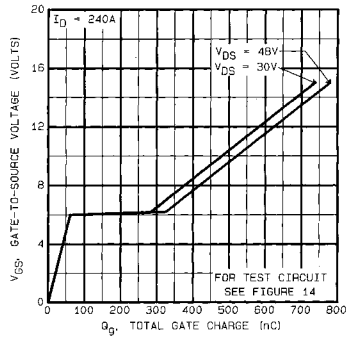


# IRFK4H054, IRFK4J054

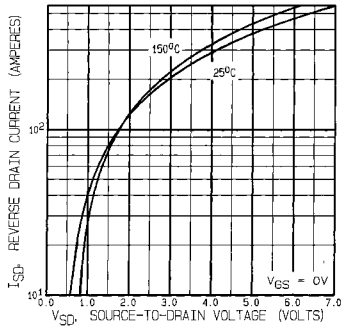




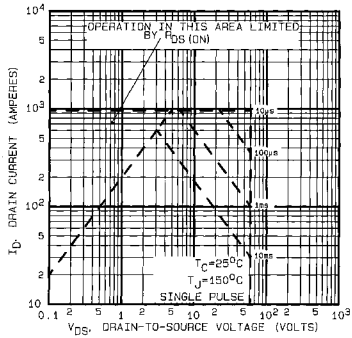
**Fig 5.** Typical Capacitance Vs. Drain-to-Source Voltage



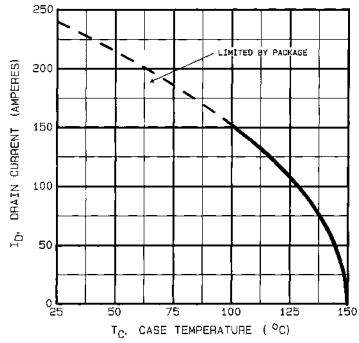
**Fig 6.** Typical Gate Charge Vs. Gate-to-Source Voltage



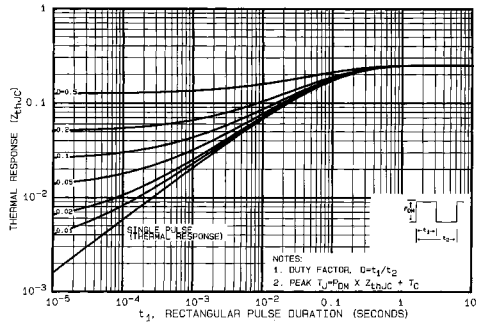
**Fig 7.** Typical Source-Drain Diode Forward Voltage



**Fig 8.** Maximum Safe Operating Area



**Fig 9. Maximum Drain Current Vs. Case Temperature**



**Fig 10. Maximum Effective Transient Thermal Impedance, Junction-to-Case**

# IRFK4H054, IRFK4J054

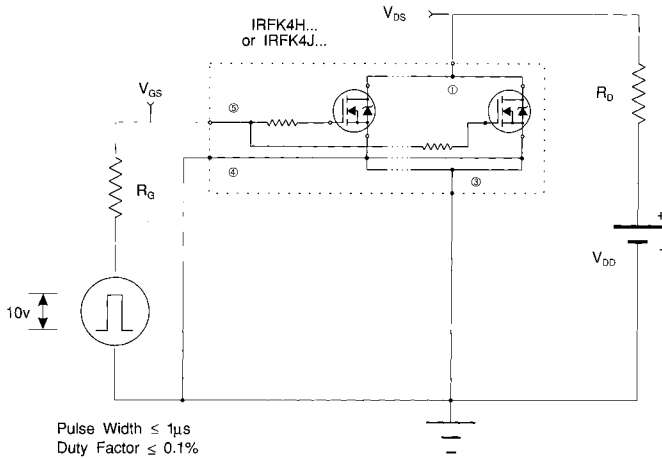


Fig 11a. Switching Time Test Circuit

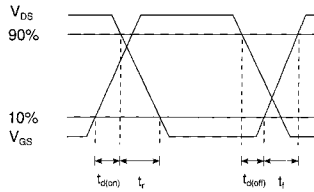
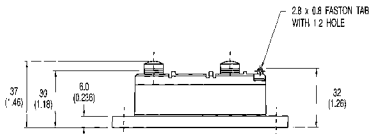
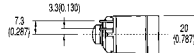
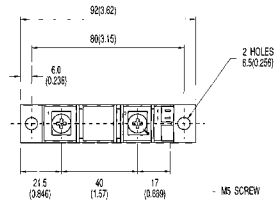
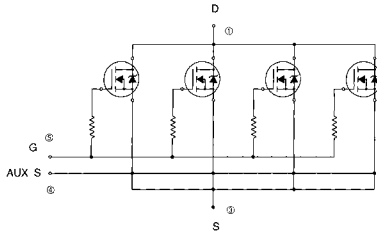


Fig 11b. Switching Time Waveforms



# IRFK4H054, IRFK4J054

## Circuit Configuration and Outline



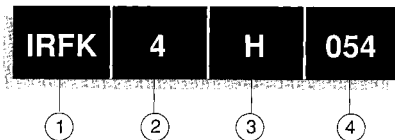
NOTE:  
DEVICE IS SUPPLIED WITH  
AUXILIARY LEADS 200(7.87) LONG

All dimensions in millimetres (inches)

# IRFK4H054,IRFK4J054



## Part Numbering



1. - HEX-pak Module.
2. - Number of HEXFETs in parallel.
3. - H - Fast switching.
  - J - Oscillation resistant for sensitive applications.
4. - Voltage code:-
  - 054 - 60V
  - 150 - 100V
  - 250 - 200V
  - 350 - 400V
  - 450 - 500V
  - C50 - 600V

**WORLD HEADQUARTERS:** 233 Kansas St., **EL SEGUNDO**, California 90245, USA, Tel:(213) 772-2000. Tlx:684464. Fax:(213) 772-9028  
**EUROPEAN HEADQUARTERS:** Hurst Green, **OXTED**, Surrey RH6 9BS, UK. Tel:(0885) 713215. Tlx:95219. Fax:(0885)714234.

**CANADA:** 101 Bentley St., Markham, **ONTARIO L3R 3L1**, Tel:(416)475-1897. Tlx:08-966-650. Fax:(416)475-8801  
**CZECHOSLOVAKIA:** Macurova 19/1565, Box 30, 149 00 **PRAGUE**, Tel:(2) 792 6881. Fax:(2) 792 6891.  
**DENMARK:** P.O. Box 70, Krogshøjvej 51, DK-2930 **BAGSVAERD**, Tel:(45) 44 37 71 50. Fax:(45) 44 37 71 52.  
**FRANCE:** 123 Rue de Petit Vaurs, 91360 **EPINAY SUR BRGYS**, Tel:(1)94.54.83.29. Tlx:300093. Fax:(1)94.54.83.30.  
**FINLAND:** **Billskogsvägen** 19, 02580 Spjunda St. Tel:(0) 262 8144. Fax:(0) 262 8150.  
**GERMANY:** Saalburgstr. 157, D-6380 **BAD HOMBURG**, Tel:(61)72 37066. Tlx:410404. Fax:(61)72 37085.  
**HUNGARY:** Szent Istvan Park 15, H-1137 **BUDAPEST**, Tel:(1) 1298 822. Fax:(1) 1298 922.  
**HONG KONG:** 232 Peter Building, 30 Queens Road Central, **HONG KONG**, Tel:(05) 252 3535. Fax:(65) 284 5298.  
**ITALY:** Via Liguria 49, 10071 Borgaro, **TORINO**, Tel:(0)11470 14 84. Tlx:221267. Fax:(0)11470 42 90.  
Via Zucca 8, 20017 Rho **MILANO**, Tel:(02)93 50 36 50. Fax:(02)93 50 36 55.  
Via Arno 1, 40139 **BOLOGNA**, Tel:(051)49 33 07. Fax:(051)49 54 80.  
**INDIA:** 31 Greenacre, 5 Junior Park, Khar (W), **BOMBAY** 400 052. Tel:(022)535026/53779/540242. Tlx:011-71481.  
**JAPAN:** K & H Bldg. 2F-3-30-4 Nishi-kebakuro, Toshima-ku, **TOKYO** Japan 171. Tel:(03)983 0641. Fax:(03)983 0642.  
**SINGAPORE:** HEX 10-01 Fortune Centre, 190 Middle Road, **SINGAPORE** 0716. Tel:(65)336 3922/337 4695/336 6286. Fax:(65)337 4892.  
**SWEDEN:** Box: 96, S-162 12 Vallgöby 1, **STOCKHOLM**, Tel:(08)670035. Fax:(08)674242.  
**SWITZERLAND:** **CH-8032 ZÜRICH**, Kirchenweg 5. Tel:(01)386 8702/8686. Fax:(01)383 5108/2379.  
**U.S.A.:**  
**Central Zone:** 2401 Plum Grove Road, Suite 111, **PALATINE, IL** 60067. Tel:(312)397-0002. Fax:(312)397-0114.  
**Eastern Zone:** 71 Grand Avenue, **PALISADES PARK, NJ** 07650. Tel:(201)943 4554. Fax:(201)943 5754.  
**Southern Zone:** 800 Office Plaza Blvd., Suite 401, **KISSIMMEE, FL** 32743. Tel:(407)933-2383. Fax:(407)933-2293.  
**Western Zone:** 222 Kansas Street, **EL SEGUNDO, CA** 90245. Tel:(213)697-8886. Fax:(213)640-6553.

Sales Offices, Agents and Distributors in Major Cities throughout the World.

In the interest of product improvement INTERNATIONAL RECTIFIER reserves the right to change specifications at any time without notice.